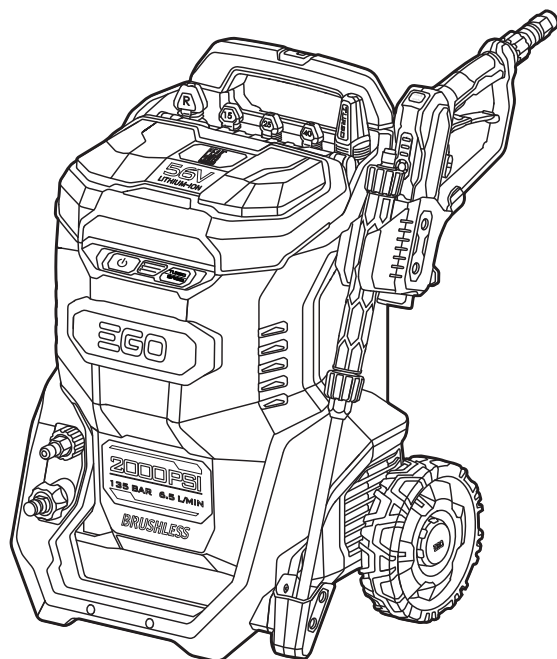


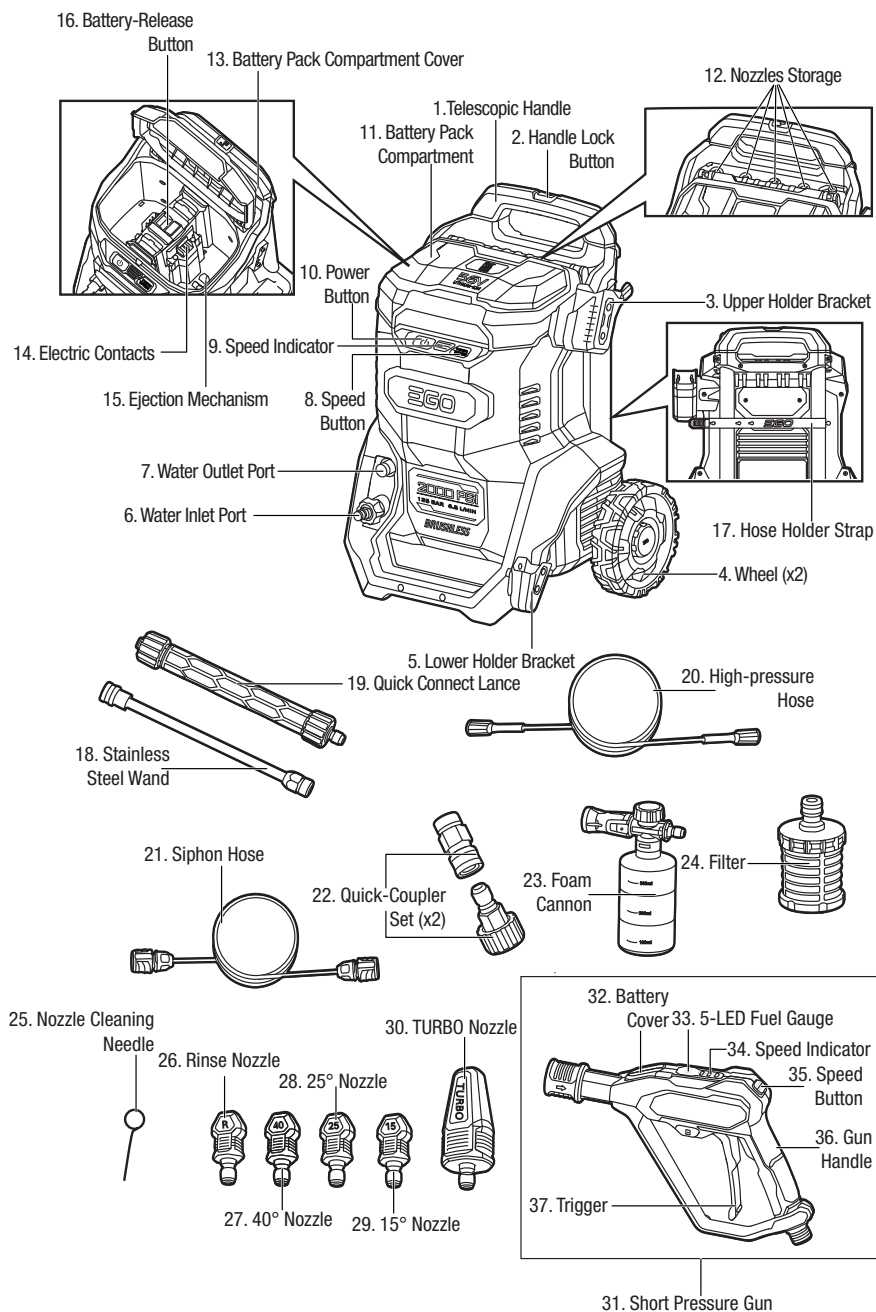


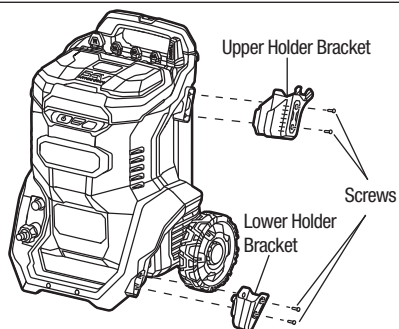
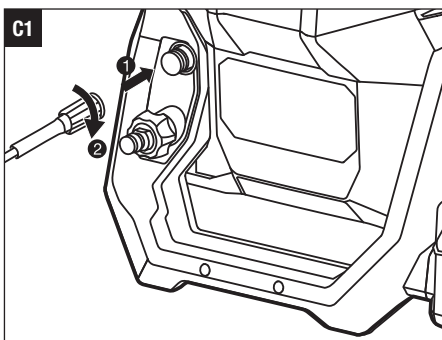
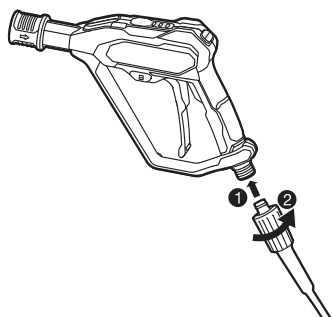
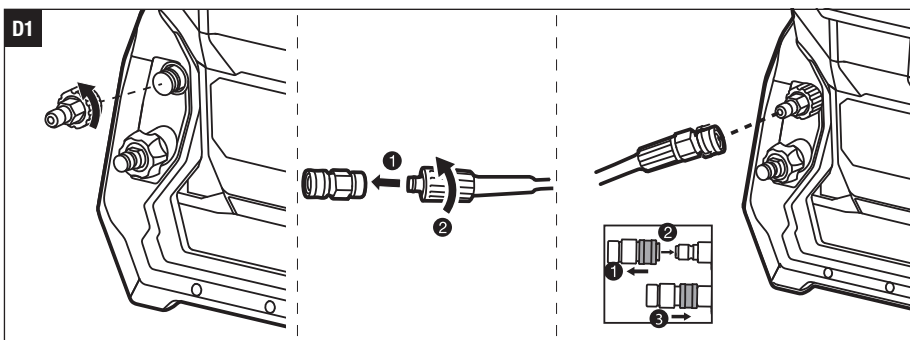
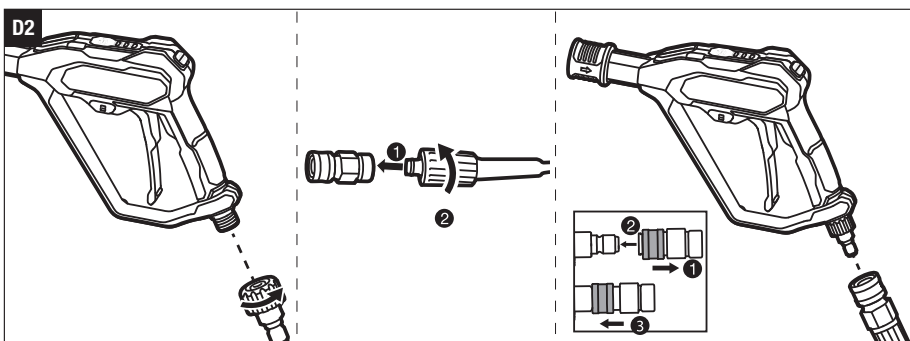
POWER⁺ WASHER

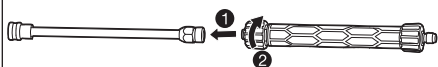
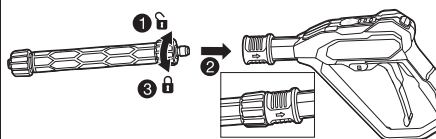
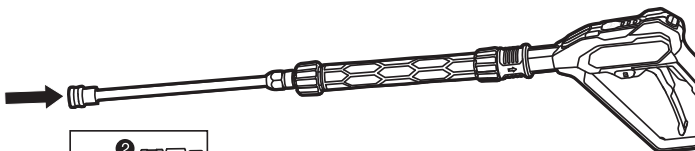
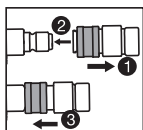
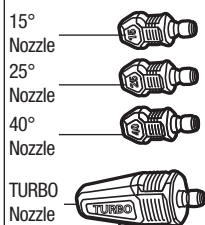


OPERATOR'S MANUAL
**56 VOLT LITHIUM-ION CORDLESS
PRESSURE WASHER**
MODEL NUMBER HPW2000E

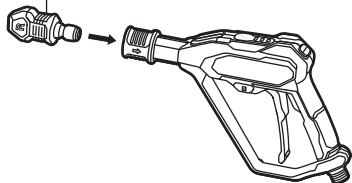
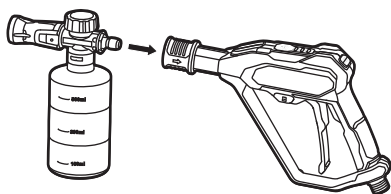
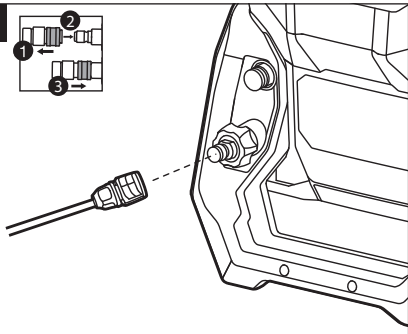
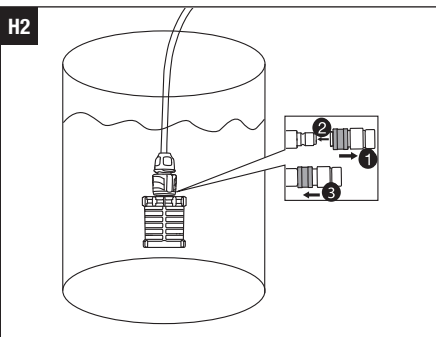
⚠ WARNING: To reduce the risk of injury, the user must read and understand the Operator's Manual before using this product. Save these instructions for future reference.

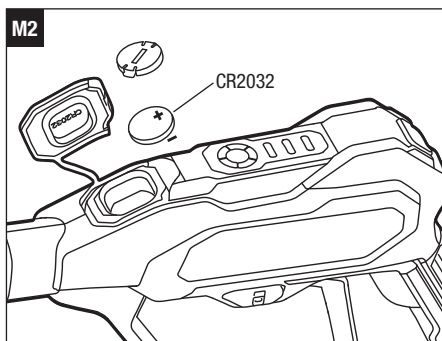
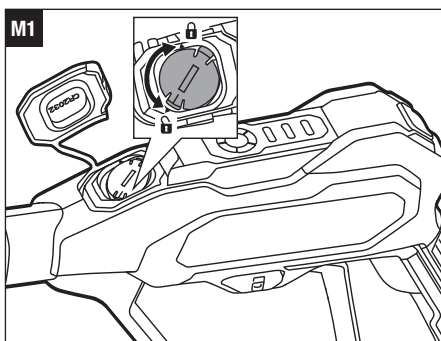
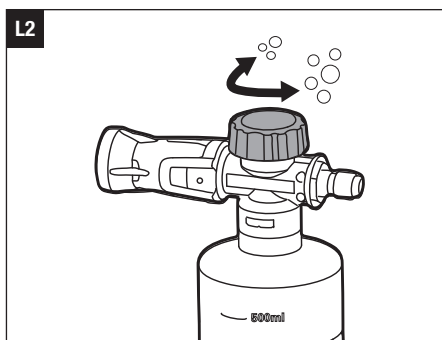
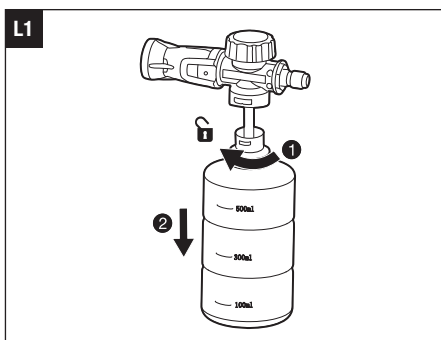
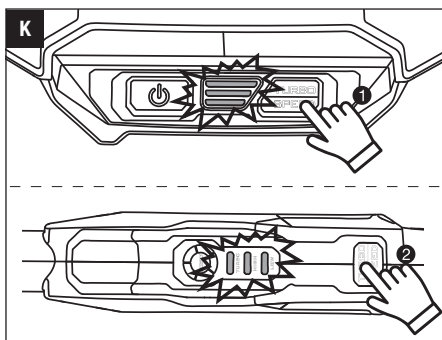
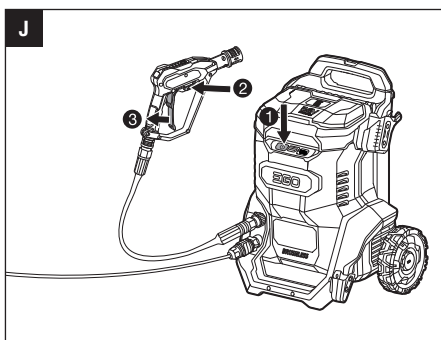
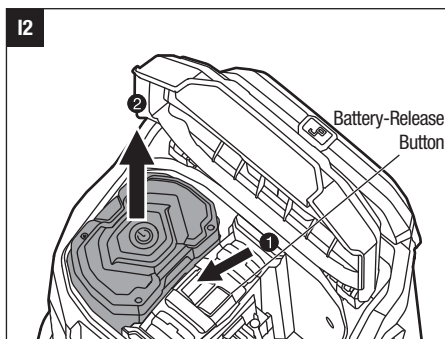
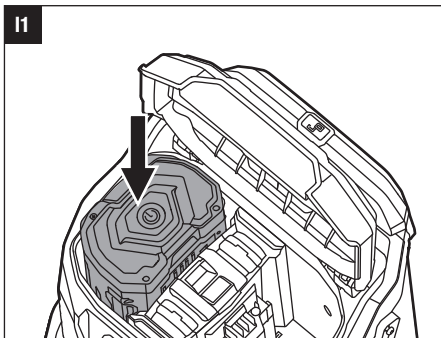


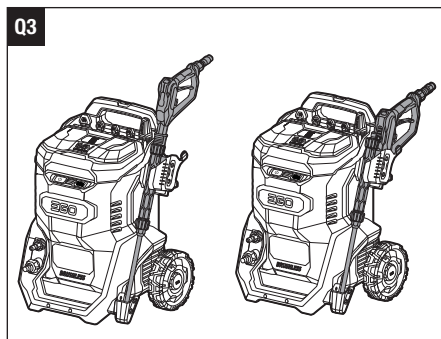
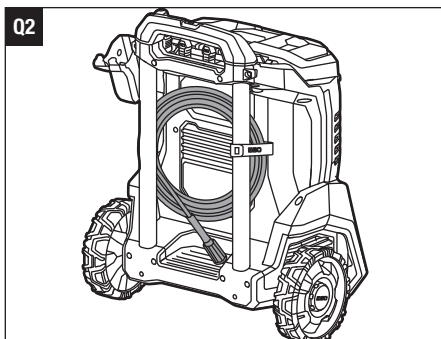
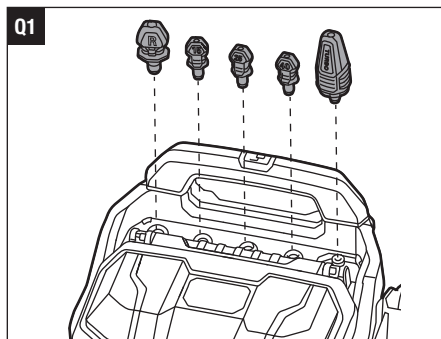
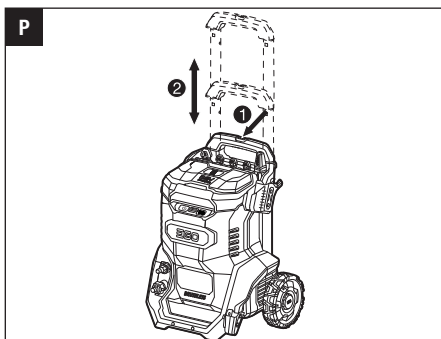
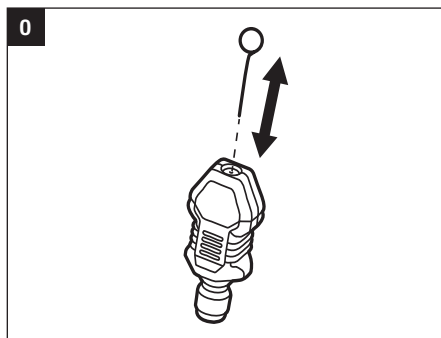
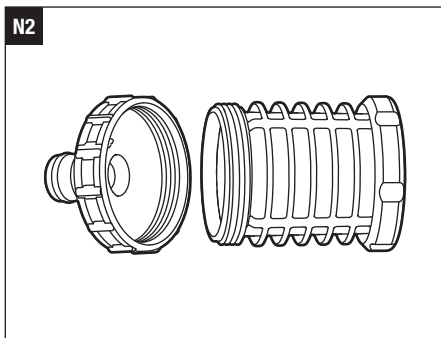
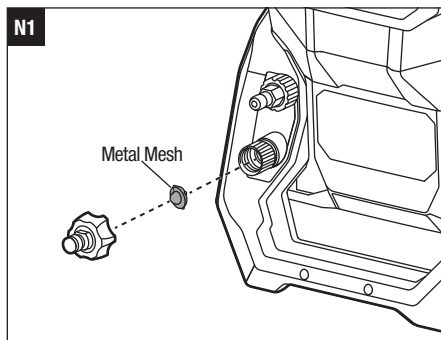
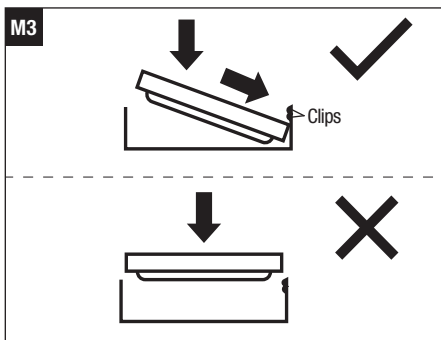
B**C1****C2****D1****D2**

E1**E2****F1****F2**

Rinse Nozzle

**G****H1****H2**





READ ALL INSTRUCTIONS!



READ OPERATOR'S MANUAL

WARNING: To ensure safety and reliability, all repairs and replacements should be performed by a qualified service technician.

SAFETY SYMBOLS

The purpose of safety symbols is to attract your attention to possible dangers. The safety symbols and the explanations with them deserve your careful attention and understanding. The symbol warnings do not, by themselves, eliminate any danger. The instructions and warnings they give are no substitutes for proper accident prevention measures.

WARNING: Be sure to read and understand all safety instructions in this Operator's Manual, including all safety alert symbols such as **"DANGER," "WARNING,"** and **"CAUTION"** before using this tool. Failure to follow all instructions listed below may result in electric shock, fire, and/or serious personal injury.

SYMBOL MEANING

WARNING: The operation of any power tools can result in foreign objects being thrown into your eyes, which can result in severe eye damage. Before beginning power tool operation, always wear safety goggles or safety glasses with side shields and a full face shield when needed. We recommend a Wide Vision Safety Mask for use over eyeglasses or standard safety glasses with side shields.

SAFETY INSTRUCTIONS

This page depicts and describes safety symbols that may appear on this product. Read, understand, and follow all instructions on the machine before attempting to assemble and operate it.

	Safety Alert	Precautions that involve your safety.
	Read Operator's Manual	To reduce the risk of injury, user must read and understand operator's manual before using this product.

	Do not connect to the potable water mains.	Product is not intended to be connected to the potable water mains.
	Never spray yourself, others, animals, power sources, or the unit itself.	Only use product within the scope of its application.
	Water pressure	Product has its limited water pressure.
	Water flow	Product has its limited water flow.
	Operating Temperature	Operate product at specified temperature.
	Regulatory Compliance Mark	This product complies with applicable Australian standards.
	WARNING – This product contains a lithium coin battery.	The battery is hazardous and is to be kept away from children (whether the battery is new or used); The battery can cause severe or fatal injuries in 2 hours or less if it is swallowed or placed inside any part of the body; Medical attention should be sought immediately if it is suspected the battery has been swallowed or place inside any part of the body.
	WEEE	Waste electrical products should not be disposed of with household waste. Take to an authorized recycler.
	Direct Current	Type or a characteristic of current
IPX5	Ingress Protection Degree	Protection from water jets
kg	Kilogram	Weight
V	Volt	Voltage
°C	Celsius	Temperature
L/min	Liter per minute	Air Volume
MPa	Megapascal	Pressure

⚠ WARNING: Read and understand all instructions before using the machine. Failure to follow all instructions listed below may result in electric shock, fire and/or serious personal injury.

⚠ WARNING: Do not direct the jet against yourself or others in order to clean clothes or foot-wear.

⚠ WARNING: Risk of explosion – Do not spray flammable liquids.

⚠ WARNING: High pressure cleaners shall not be used by children or untrained personnel.

⚠ WARNING: High pressure hoses, fittings and couplings are important for the safety of the machine.

⚠ WARNING: Water that has flowed through backflow preventers is considered to be non-potable.

⚠ WARNING: Do not use the machine if important parts of the machine are damaged, e.g. safety devices, high pressure hoses, short pressure gun.

⚠ WARNING: Depending on the application, shielded nozzles can be used for high pressure cleaning, which will reduce the emission of hydrous aerosols dramatically. However, not all applications allow the use of such a device. If shielded nozzles are not applicable for the protection against aerosols, a respiratory mask of class FFP 2 or equivalent may be needed, depending on the cleaning environment.


- This machine is not intended for use by persons (including children) with reduced physical, sensory or mental capabilities, or lack of experience and knowledge. Children should be supervised to ensure that they do not play with the appliance.
- Know how to stop the product and bleed pressure quickly. Be thoroughly familiar with the controls.
- Prevent unintentional starting. Ensure the switch is in the off-position before connecting to battery pack, picking up or carrying the appliance. Carrying the appliance with your finger on the switch or energizing appliance that has the switch on invites accidents.
- Always be aware of the danger of the reaction force and the sudden torque on the spray assembly when operating the gun.
- Do not expose the appliance or battery to excessive temperatures.
- Be aware of the risk of terminals of the battery-operated appliance or battery being short-circuited by metal objects.
- Rechargeable batteries are to be removed from the appliance before being charged.
- Different types of batteries or new and used batteries are not to be mixed.

- Exhausted batteries are to be removed from the appliance and safely disposed of.
- If the appliance is to be stored unused for a long period, the batteries should be removed.
- Do not use non-rechargeable batteries in place of rechargeable batteries.
- Do not use modified or damaged batteries.
- **Use only with the specified battery packs and chargers.**

BATTERY PACK	CHARGER
BA1400, BA2800, BA4200, BA1400T, BA2800T, BA4200T, BA5600T, BA6720T	CH2100E, CH5500E, CH7000E

Save these instructions. Refer to them frequently and use them to instruct others who may use this machine. If you lend someone this machine, lend them these instructions also to prevent misuse of the product and possible injury.

SPECIFICATIONS

Voltage	56 V 
Maximum Rated Pressure	135 Bar
Maximum Rated Flow (with quick connect lance and stainless steel wand connected)	6.5 L/min
Maximum Rated Flow (with only short pressure gun connected)	9.5 L/min
Limited Maximum Pressure for Gun	250 Bar
Limited Maximum Flow for Gun	30 L/min
Weight (without battery pack)	16.8 kg
Recommended Operating Temperature	5°C - 40°C
Recommended Storage Temperature	-20°C - 70°C

PACKING LIST (FIG. A)

RECOMMENDED ACCESSORIES

⚠ WARNING: Use only accessories listed below. Use of accessories that do not meet the original equipment specifications may lead to improper performance and compromised safety.

PART NAME	MODEL NUMBER
Premium Foam Cannon	AFC2000E

DESCRIPTION

KNOW YOUR PRESSURE WASHER (Fig. A)

ASSEMBLY

INSTALLING THE HOLDER BRACKET ASSEMBLY (Fig. B)

CONNECTING THE HIGH-PRESSURE HOSE (Fig. C – Fig. D)

You may connect the high-pressure hose by one of the following ways:

- Connect the high-pressure hose to the water outlet port and the gun directly using threaded connectors (Fig. C1 – Fig. C2);
- Connect the high-pressure hose to the water outlet port and the gun using two quick-coupler sets to achieve easy installation/removal (Fig. D1 – Fig. D2).

NOTE: The quick-coupler sets have been installed onto the water outlet port, high-pressure hose, gun at the factory.

CONNECTING THE LANCE AND WAND (Fig. E1 – Fig. E2)

To disconnect, screw the wand from the lance and then pull it out; loosen the knob on the lance and then pull back the outer ring of the quick-coupler of the gun to pull out the lance.

⚠ WARNING: Always hold the gun with one hand and the lance with the other hand when disconnecting the lance from the gun. Personal injury may result if the lance falls.

CONNECTING A NOZZLE (Fig. F1 / Fig. F2)

NOTE: The nozzles cannot be connected to the lance.

- Choose the 15° nozzle, 25° nozzle, 40° nozzle, or Turbo nozzle to install onto the wand (Fig. F1).
- The rinse nozzle is connected to the gun directly (Fig. F2).

⚠ WARNING: Always hold the gun with one hand and the nozzle with the other hand when disconnecting the nozzle from the gun. Personal injury may result if the nozzle jumps out.

Use the table below to pick the right nozzle for the job.

Nozzle Selection	Applications
Yellow 15° Nozzle	Clean small metal, concrete, or wood surfaces.
Green 25° Nozzle	Clean larger metal, concrete, or wood surfaces.
White 40° Nozzle	Clean wide metal, concrete, wood, or vinyl surfaces.
Gray Rinse Nozzle	Rinse vehicles. Rinse the detergent off of metal, concrete, wood, or vinyl.
Turbo Nozzle	Clean hard surfaces only. To prevent surface damage, do not use on cars and wooden surfaces.

CONNECTING THE FOAM CANNON (Fig. G)

The foam cannon is connected to the gun directly.

To disconnect, pull back the outer ring of the quick-coupler, and then pull out the foam cannon.

CONNECTING THE SIPHON HOSE (Fig. H1 – Fig. H2)

When using a water bucket (not provided) as a source of water, connect the pressure washer to the siphon hose.

NOTE: Prefill the bucket so when immersed filter does not float to the surface.

CONNECTING TO A GARDEN HOSE (NOT PROVIDED)

When using water tap (not provided) as a source of water, connect the pressure washer to a garden hose (not provided).

OPERATION

APPLICATION

You may use this product for the purposes listed below:

- Cleaning dirt on automobiles, walls, floors, etc.

ATTACHING/DETACHING THE BATTERY PACK

Refer to corresponding battery packs and chargers manuals for more details.

Fully charge before first use.

NOTE: Using one battery pack will not allow you achieve **TURBO** speed. For best performance, we strongly recommend use of two 5.0Ah or greater Ah

battery packs.

1. Raise the battery compartment cover by lifting the front of the cover.
2. **To attach**, align the battery ribs with the mounting slots in one and press the battery pack down until you hear a “click”. Attach the other battery (Fig. I1).
3. **To detach**, depress the battery-release button and pull the battery pack out (Fig. I2).
4. Close the battery compartment cover.

STARTING/STOPPING THE PRESSURE WASHER (Fig. J)

To Start the Pressure Washer

NOTE: Do not start the pressure washer without water supply connected and turned on. This may damage the high-pressure seals and decrease pump life.

1. Ensure that the siphon hose, high-pressure hose, gun, nozzle are connected properly.
2. Connect lance, wand, foam cannon, filter according to your needs.
3. Choose one of below water supply ways:
 - When using a garden hose (not provided), connect the pressure washer to the garden hose and then open the water tap.
 - When using a water bucket, connect the filter to the siphon hose and then immerse the filter and the quick-coupler joint fully into the water bucket.
4. Install the battery pack(s).
5. Press the power button to power on the pressure washer. The washer will always run at high speed after each start.

NOTE: When the pressure washer is powered on but with no further actions, the washer will turn off automatically after 5 minutes of standby. During the first several minutes of standby, the speed indicator on the pressure washer will flash three green lights, which indicates there is no water flowing into the siphon hose.

6. Hold the gun with both hands, press the unlock side of the lock-off button and then squeeze the trigger until a steady water flow is produced.

NOTE: If the lance is connected, hold the gun with one hand and the lance with the other hand.

7. Start spray washing.

NOTE: It may take some time for the water to travel from the source and come out of the nozzle as a steady spray. To achieve a steady water flow quickly, you may want to:

- a. Remove the nozzle.
- b. Press the trigger and wait until a steady water stream starts coming out of the wand.
- c. Release the trigger and re-install the nozzle.

To Stop the Pressure Washer

1. Once the washing is completed, release the trigger and press the lock-off button to lock position.
2. Press the power button to power down the pressure washer.
3. Close the water tap or remove the siphon hose from the water bucket.
4. Press the lock-off button of the gun to the unlock position and squeeze the trigger to empty the water from the hoses.

NOTE: The gun, hoses, wands, nozzles, or foam cannon should not be disconnected for as long as the water remains in the hoses.

5. Disconnect and remove the gun, hoses, wands, nozzles, or foam cannon.
6. Press the power button to power on the pressure washer to empty the water in the pressure washer.
7. Press the power button again to power down the pressure washer.
8. Remove the battery pack(s).

REMOTE CONTROL

The gun can be paired with the pressure washer to function as a remote control.

Short Pressure Gun Pairing (Fig. K)

1. Insert the battery pack(s) and power on the pressure washer.
2. Long-press the speed button on the pressure washer unit until its three green lights start flashing.

NOTE: The flashing will last approximately 20 s, so the gun can be paired only during this time. You could also short-press the speed button on the washer to exit the pairing mode any time.

3. Long-press the speed button on the gun until its three green lights start flashing, which means the pairing process has started.

NOTE: The flashing indicating the pairing process will last approximately 10 s. You could short-press the speed button on the gun to exit the pairing process any time.

4. The speed indicators on the washer and the gun will display three green lights together for 3 s to indicate the pairing was successful, then display two green lights.

5. If the pairing has failed, the speed indicators on the washer and the gun will flash three green lights and then turn off.

Using the Remote Control

After the pairing is completed, press the speed button once on the gun, the 5-LED fuel gauge and speed indicator will light up. Press the speed button again to actually change the speed.

NOTE:

- The 5-LED fuel gauge and speed indicator will shut off when there is no further action on the speed button of the gun within 10 s.
- The 5-LED fuel gauge indicates the battery-charge level. When two battery packs are installed, it indicates the level of the battery pack with the higher charge.
- The speed indicator on the gun is always synchronized with the speed indicator on the pressure washer unit.

SPEED SELECTION

- The speed of the pressure washer could be adjusted by the speed button on either the washer or the paired gun.
- The speed of the pressure washer could be adjusted when the washer is powered on or during spraying.
- Every time the speed button is pressed, the speed will toggle among high level, TURBO level and low level. The speed indicator displays one green light, two green lights, or three green lights to indicate the pressure washer running at low speed, high speed, or TURBO, respectively.

NOTE: When only one battery pack is inserted, the TURBO speed can not be achieved and every time the speed button is pressed, the speed will toggle between high level and low level.

NOTE: If the pressure washer keeps operating at TURBO speed, the runtime per charge may be affected.

CLEANING WITH DETERGENT

⚠ WARNING: Only use detergents specifically made for use with pressure washers. Comply with the application, disposal, and safety instructions of the detergent manufacturer.

1. Turn the bottle of the foam cannon counterclockwise and remove it (Fig. L1).
2. Pour detergent into the bottle.

NOTE: The temperature of the detergent should not exceed 60 °C.

3. Replace the foam cannon and connect it to the quick-coupler of the gun.
4. Rotate the detergent knob to adjust the amount of detergent added to the water flow according to your needs (Fig. L2).

MAINTENANCE

⚠ WARNING: To prevent serious personal injury, remove the battery pack from the product before servicing, cleaning, changing attachments, or removing material from the unit.

GENERAL MAINTENANCE

Avoid using solvents when cleaning plastic parts. Most plastics are susceptible to damage from various types of commercial solvents and may be damaged by their use. Use a clean cloth to remove dirt, dust, oil, grease, etc.

⚠ WARNING: Do not at any time allow brake fluids, gasoline, petroleum-based products, penetrating oils, etc. to come in contact with plastic parts. Chemicals can damage, weaken or destroy plastic which may result in serious personal injury.

⚠ WARNING: To reduce the risk of fire, personal injury, and product damage due to a short circuit, never immerse your machine, battery pack or charger in fluid or allow a fluid to flow inside them. Corrosive or conductive fluids, such as seawater, certain industrial chemicals, and bleach or bleach containing products, etc., can cause a short circuit.

REPLACING THE COIN CELL BATTERY (Fig. M1 & M2)

⚠ WARNING: Keep out of reach of children. Swallowing can lead to chemical burns, perforation of soft tissue, and death. Severe burns can occur within 2 h of ingestion. Seek medical attention immediately.

NOTE: Never push the battery directly into the compartment (Fig. M3). Otherwise, the two clips will be damaged, causing failure of the gun remote control.

NOTE: Repair the gun with the pressure washer after the coin cell battery is replaced following the instructions in the section “Short Pressure Gun Pairing”.

CLEANING THE FILTERS

- Unscrew and remove the knob on the water inlet port, and then take out the metal mesh from the water inlet port, rinse the metal mesh or replace it if necessary (Fig. N1).

- Remove the filter from the siphon hose, screw out the filter, and then rinse it thoroughly (Fig. N2).

CLEANING THE NOZZLES (Fig. O)

When the holes of the nozzles are blocked, you may use the provided nozzle cleaning needle to pass through the holes and remove blockage.

TRANSPORTING THE PRESSURE WASHER (Fig. P)

Press the handle lock button, and then pull out the telescopic handle to the first length level until you hear a “click”. If desired, you may press the handle lock button, and then pull the telescopic handle out to the second length level.

STORING THE PRESSURE WASHER

1. Stop the pressure washer, release pressure, empty water, and remove the battery pack from the pressure washer following the instructions in the section “**To Stop the Pressure Washer**”.
2. Store nozzles in the nozzle storage area of the pressure washer (Fig. Q1).
3. Roll up the high-pressure hose and store it behind the telescopic handle (Fig. Q2).
4. Store the gun and lance and wand assembly into the holder brackets or disconnect the gun and store it in the upper holder brackets (Fig. Q3).
5. Clean the pressure washer thoroughly before storing it.
6. Store the pressure washer in a dry, well-ventilated area, locked-up or up high, out of the reach of children. Do not store the pressure washer on or adjacent to fertilizers, gasoline, or other chemicals.

Protecting the environment



Do not dispose of electrical equipment, used battery and charger into household waste! Take this product to an authorized recycler and make it available for separate collection. Electric tools must be returned to an environmentally compatible recycling facility.

TROUBLESHOOTING

PROBLEM	CAUSE	SOLUTION
The pressure washer fails to be powered on.	<ul style="list-style-type: none"> ■ Battery pack charge is low. ■ Battery pack is not installed properly. 	<ul style="list-style-type: none"> ■ Charge the battery pack. ■ Slide the battery pack into the battery compartment until it snaps into position.
The TURBO speed could not be activated.	<ul style="list-style-type: none"> ■ Only one battery pack is used for the washer operation. 	<ul style="list-style-type: none"> ■ Use two 5.0Ah or greater Ah battery packs.
The pressure washer pump stops working and the speed indicator on the washer flashes three green lights.	<ul style="list-style-type: none"> ■ The pressure washer or the battery pack(s) are over temperature. ■ The nozzle is blocked. ■ No water flows into the siphon hose. ■ Battery pack charge is low. ■ Other electronic fault(s). 	<ul style="list-style-type: none"> ■ Wait until the pressure washer or battery pack(s) return to the operating temperature and then restart the washer. ■ Use the nozzle cleaning needle to pass through the holes. ■ Check and ensure there is water flowing into the siphon hose properly. ■ Charge the battery pack. ■ Contact EGO customer service.
The water flow is low during spraying.	<ul style="list-style-type: none"> ■ The filter is blocked partially. ■ The metal mesh in the water inlet port is blocked partially. ■ The filter and quick-coupler joint of the siphon hose is not fully immersed into water. ■ The siphon hose is folded. ■ Water is dirty. ■ The high-pressure hose is blocked. 	<ul style="list-style-type: none"> ■ Clean the filter. ■ Remove and clean the metal mesh. ■ Fully immerse the filter and quick-coupler joint into water. ■ Unfold the siphon hose or replace it. ■ Use only clean water. ■ Remove the nozzle, and then start water spraying from the hose to clear the blockage of the hose.

PROBLEM	CAUSE	SOLUTION
There's no water spraying out.	<ul style="list-style-type: none"> ■ There is no water supply. ■ The filter is blocked completely. ■ The metal mesh in the water inlet port is block completely. ■ The nozzle is blocked. ■ Pump, hoses, or other components are frozen. 	<ul style="list-style-type: none"> ■ Check and ensure the washer is connected to the water supply properly. ■ Clean the filter. ■ Remove and clean the metal mesh. ■ Use the nozzle cleaning needle to pass through the holes. ■ Wait until they are thawed.
The water flow is not stable.	<ul style="list-style-type: none"> ■ Air flows into the washer. ■ Pump seals are worn. 	<ul style="list-style-type: none"> ■ Check and ensure the siphon hose is connected properly. ■ Contact EGO customer service.
The water spraying starts or stops automatically.	<ul style="list-style-type: none"> ■ The high-pressure hose is damaged. ■ There's water leakage from the gun. ■ Pump seals, hose seals are worn. 	<ul style="list-style-type: none"> ■ Replace with new high-pressure hose. ■ Contact EGO customer service. ■ Contact EGO customer service.
The gun cannot control the washer.	<ul style="list-style-type: none"> ■ The position of the gun is beyond wireless connection range. ■ The coin cell (button cell) battery charge is low. ■ The gun is not paired properly. ■ Coin cell battery is not installed properly. 	<ul style="list-style-type: none"> ■ Take the gun closer to the pressure washer. ■ Replace with a new coin cell (button cell) battery. ■ Complete the pairing following the instructions in the section "Short Pressure Gun Pairing". ■ Install the coin cell battery following the instructions in the section "REPLACING THE COIN CELL BATTERY".

WARRANTY POLICY

For warranty service or to make a claim, please visit our Warranty Portal at egopowerplus.com.au/warranty-policy, alternatively you can contact EGO customer service via the following: **Australia 1300 000 346, New Zealand 0508 000 346.**

Chervon Australia Pty Ltd ABN 36 165 077 501 and Chervon New Zealand Subsidiary Ltd NZBN 9429049277616 ("Chervon") warrants to the original domestic purchaser that this product will be free from defects in materials and workmanship for 5 years from date of purchase, and any battery or charger will be free from defects in materials and workmanship for 3 years from date of purchase.

Warranty for commercial use is 1 year on all product, battery and chargers. The Commercial Range Product Warranty for commercial users is 2 years for commercial tools, commercial batteries and commercial chargers. Please refer to product warranty table below for further clarification.

The warranty period for routine accessories, consumables or maintenance parts, such as, but not limited to, ride-on mower seat, wheels, tyres, anti-scalp wheels, brake discs, blades, trimmer heads, chain bars, saw chains, augers, blower nozzles, and all other EGO accessories is 90 days for residential purpose, 30 days for industrial, professional or commercial purpose. These parts are covered for 90/30 days from manufacture defects in normal working conditions.

To make a claim, call 1300 000 346 for AU or 0508 000 346 for NZ or lodge a claim via our portal link above. Any handling and transportation costs (and other expenses incurred in claiming this warranty) are not covered by this warranty and will not be borne by Chervon. The replacement product or part or repaired product will be made available for your collection at an address nominated by Chervon. Where a valid warranty claim is made, Chervon will replace the defective product or repair the fault. Where the product is repaired, Chervon may use refurbished parts. This warranty does not cover normal wear and tear, misuse or abuse (including overloading of the product beyond capacity and exposure to water or rain), accidents, neglect or lack of proper installation, and improper maintenance or storage. This warranty does not cover the damage resulting from modification, alteration or unauthorised repair. This warranty does not cover normal deterioration of the exterior finish, including but not limited to scratches, dents, paint chips, or to any corrosion or discolouring by heat, abrasive and chemical cleaners. This warranty is void if the product has been used for rental purpose. This warranty may also be further limited or voided as specifically detailed in the product Manual. Chervon has no other liability under this warranty. The benefits to you given by this warranty are in addition to other rights and remedies imposed by State and Federal legislation that cannot be excluded. Our goods come with guarantees that cannot be excluded under the Australian Consumer Law and the New Zealand Consumer Guarantee Act 1993. You are entitled to a replacement or refund for a major failure and compensation for any other reasonably foreseeable loss or damage. You are also entitled to have the goods repaired or replaced if the goods fail to be of acceptable quality and the failure does not amount to a major failure. The warranty applies to the original purchaser and applies only to purchases made from authorised EGO Dealers, which can be confirmed on the website store locator. For avoidance of doubt, 3rd party online stores such as eBay, Gumtree, Amazon, etc. are excluded.

Chervon Australia Pty Ltd, Unit 14, 5 Kelletts Rd, Rowville, VIC. 3178.

Ph Australia; 1300 000 346. Email: support@egopowerplus.com.au

Chervon New Zealand Subsidiary Ltd, 4th Floor, Smith & Caughey Building, 253 Queen St, Auckland, 1141.

Ph New Zealand; 0508 000 346. Email: support@egopowerplus.co.nz

PRODUCT OR MODEL #	LIMITED WARRANTY FOR CONSUMER USE (PERSONAL, HOUSEHOLD USE)	LIMITED WARRANTY FOR PROFESSIONAL USE (ANY COMMERCIAL, AGRICULTURAL, INSTITUTIONAL, OR INCOME-PRODUCING USE)
EGO Power+ Outdoor Power Equipment and Portable Power Products	5 years	1 year
EGO Power+ Battery Packs and Chargers	3 years	1 year
Specific warranties apply to the products below:		
Commercial Tools*	5 years	2 years
Commercial Batteries & Chargers**	3 years	2 years
Mini Bike (MB1000E)	1 Year	N/A
Accessories / Consumables	90 Days	30 Days

*Commercial Tools include: BCX3800, BCX4500, BHX1001, CSX3000, CSX5000, EDX2000, HTX5300-P, HTX5300-PA, HTX7500, LBPX8000, LBX1000, LBX6000, LMX5300SP, PPX1000, PTX5100, PSX2500, PSX2510, STX3800, STX4500.

**Commercial Batteries & Chargers include: BAX1501, CHU6000E, CHX5500E, HC2240T, PGX1400PB, PGX1600E-H, PGX3000D.