



OPERATING MANUAL

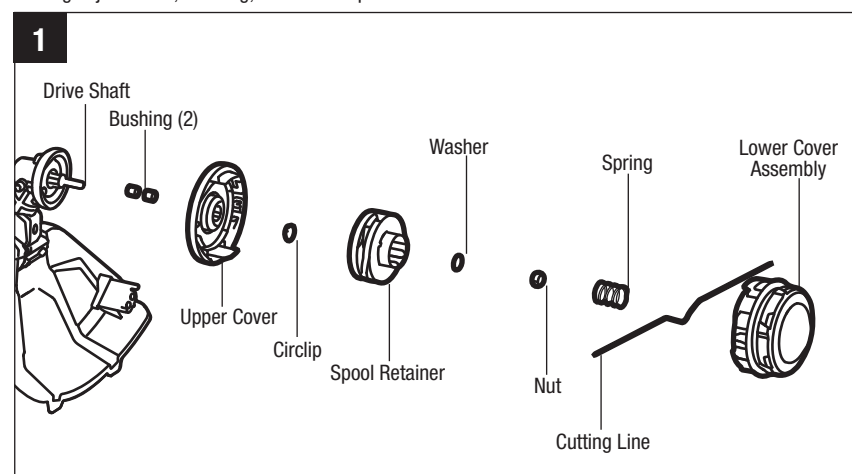
REPLACEMENT LINE TRIMMER HEAD

MODEL NUMBER AH1600

This Replacement Line Trimmer Head is exclusively compatible with EGO POWER+ Line Trimmer Attachment STA1600

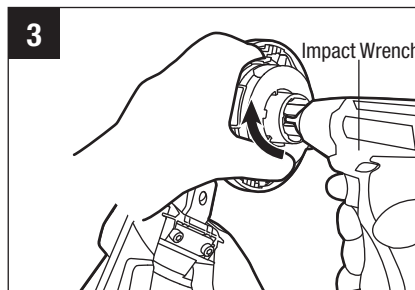
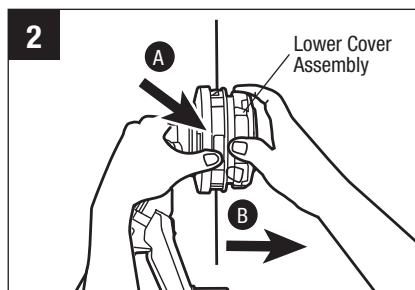
⚠ DANGER: If the head loosens after it is fixed in position, replace it immediately. Never use a trimmer with a loose cutting attachment. Replace a cracked, damaged or worn out cutting head immediately, even if damage is limited to superficial cracks. Such attachments may shatter at high speed and cause serious injury (Fig. 1).

⚠ WARNING: Always remove the battery pack from the product when you are assembling parts, making adjustments, cleaning, or when the product is not in use.



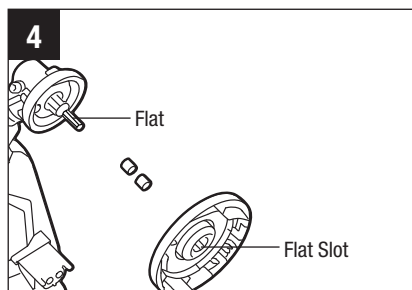
REMOVE THE TRIMMER HEAD

1. Remove the battery pack.
2. Press the release tabs on the trimmer head and remove the lower cover assembly of the trimmer head by pulling it straight out. (Fig. 2).
3. Remove the cutting line from the trimmer head.
4. Take the spring out of the spool assembly, if it got separated from the lower spring assembly. Save it for reassembly.
5. Wear gloves. Use one hand to grasp the spool assembly to stabilize it, and use the other hand to hold a 13 mm socket wrench or impact wrench (not included) to loosen the nut in the **CLOCKWISE** direction. (Fig. 3)
6. Remove the nut, washer and spool retainer from the drive shaft (Fig. 1).
7. Use needle nose pliers (not included) to remove the circlip. Remove the upper cover and two bushings from the drive shaft (Fig. 1).
8. Replace with a new trimmer head and mount it by following instructions in the chapter “Install the new trimmer head”.



Install the new trimmer head

1. Mount the two bushings on the drive shaft.
2. Align the flat slot in the upper cover with the flat in the drive shaft and mount the upper cover into place (Fig. 4).
3. Mount the circlip, spool retainer, and washer in that order (Fig.1). Use a 13 mm socket or impact wrench on the nut to tighten it **COUNTERCLOCKWISE**.
4. Following steps 4 and 5 in “**RELOADING THE CUTTING LINE**” section in this manual to mount the lower cover assembly.
5. Follow the instructions in “**LINE REPLACEMENT**” section in this manual to reload the cutting line.
6. Start the tool to see whether the string trimmer will work normally. If it does not, reassemble as described above



LINE REPLACEMENT

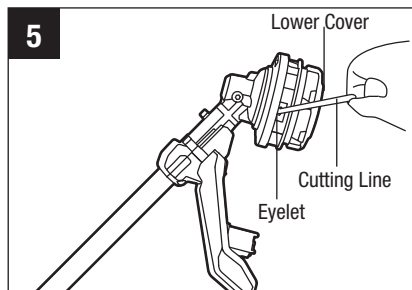
⚠ WARNING: Never use metal-reinforced line, wire, or rope, etc. These can break off and become dangerous projectiles.

⚠ WARNING: Always use the recommended nylon cutting line with diameter no more than 2.4mm. Using line other than that specified may cause the string trimmer to overheat or become damaged.

The string trimmer is equipped with an advanced **POWERLOAD™** system. The cutting line can be wound into the spool simply by pressing a single button. Loading a full spool can usually be completed in 12 seconds. **Avoid repeated operation of the winding system in rapid succession to reduce the possibility of motor damage.**

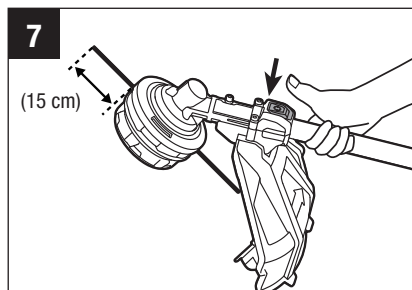
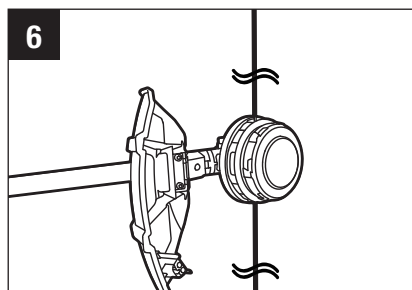
NOTICE: The **POWERLOAD™** system is only available when the attachment is connected to Power Head PH1420/ PH1420-FC and the battery pack is installed.

1. Remove the battery pack from the power head.
2. Cut one piece of cutting line 4 m long.
3. Insert the line into the eyelet (Fig. 5) and push the line until the end of the line comes out of the opposite eyelet.



NOTICE: If the line cannot be inserted into the eyelet due to lower cover is stuck, install the battery pack onto the power head, then press the line-loading button briefly to reset the lower cover.

4. Remove the battery pack if it has been installed onto the power head in the NOTICE after step 3.
5. Pull the line from the other side until equal lengths of the line appear on both sides of the trimmer head (Fig. 6).
6. Install the battery pack onto the power head.
7. Press and hold the line-loading button to start the line-winding motor. The line will be wound into the trimmer head continuously (Fig. 7).
8. Watch the remaining line length carefully. Prepare to release the button as soon as approximately 19 cm of line are left on each side. Briefly press the line loading button to adjust the length until 15 cm of the line is showing on each side.
9. Push down on the trimmer head while pulling on the lines to manually advance the line in order to check for proper assembly of the cutting line.

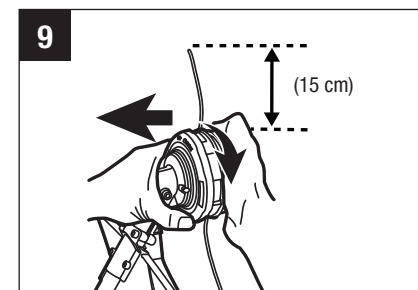
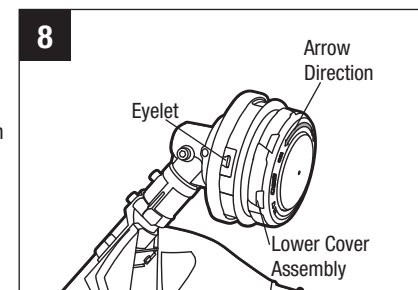


NOTICE: In case the line is pulled into the trimmer head by accident, open the head and pull the cutting line out from the spool. Follow the section “**RELOADING THE CUTTING LINE**” in this manual to reload the line.

NOTICE: When the attachment is connected to Power Head PH1400/ PH1400-FC, the **POWERLOAD™** system won't be functioning. In this case, the line should be reloaded manually. Refer to the section “**Manual line replacement**” in this manual to reload the line.

Manual line replacement

1. Remove the battery pack.
2. Cut one piece of cutting line 4 m long.
3. Insert the line into the eyelet (Fig. 8) and push the line until the end of the line comes out of the opposite eyelet.
4. Pull the line from the other side until equal lengths of line appear on both sides.
5. Press and rotate lower cover assembly in the direction indicated by the arrow to wind the cutting line onto the spool that until approximately 15 cm of line is showing on each side (Fig. 9).
6. Push the lower cover assembly down while pulling on both ends of the line to manually advance the line and to check for proper assembly of the trimmer head.



RELOADING THE CUTTING LINE

NOTICE: When the cutting line breaks from the eyelet or the cutting line is not released when the trimmer head is tapped, you will need to remove the remaining cutting line from the trimmer head and follow the steps below to reload the line.

1. Remove the battery pack from the power head.
2. Press the release tabs (A) on the trimmer head and remove the lower cover assembly of the trimmer head by pulling it straight out (Fig. 2).
3. Remove the cutting line from the trimmer head.
4. Insert the spring into the slot in the lower cover assembly if it got separated from the lower spring assembly (Fig. 10).
5. With one hand holding the trimmer, use another hand to grasp the lower cover assembly and align the slots in the lower cover assembly with the release tabs. Press the lower cover assembly until it snaps into place, at which time you will hear a distinct click sound (Fig. 11, 12).
6. Follow the instructions in the “**LINE REPLACEMENT**” section to reload the cutting line.

